

YOUR HOME. YOUR  
STYLE. YOUR  
NEIGHBORHOOD.

Centered around a lush, expansive courtyard, Solara's modern suites and abundant amenities offers a retreat away from a busy lifestyle. Solara delivers a bold street-level sense of arrival, with underlying quality and detail everywhere.

You're near everything that matters. Universities. Lake Washington. University Village. Northgate Mall. And the Burke-Gilman Trail. With easy access to I-5, I-405, Highway 99 and Lake City Way, you're near all the conveniences that you deserve and the best of the city minutes away.



**SOLARA**  
your urban oasis

522

**SolaraApts.com**  
12736 Lake City Way NE  
Seattle, WA 98125  
206.364.3100 phone  
206.364.3101 fax

SIEMSON REALTY GROUP'S



**DISCOVER YOUR URBAN OASIS** where you can escape from the everyday pressures that life brings your way, yet have energy and excitement to enjoy what surrounds you.

Enjoy the modern living you are accustomed to, in a studio, one, two or three bedroom home with stylish accents. At Solara you'll encounter just what you have been looking for, the style and energy of the city met with serenity and balance. It's right where you want to be!

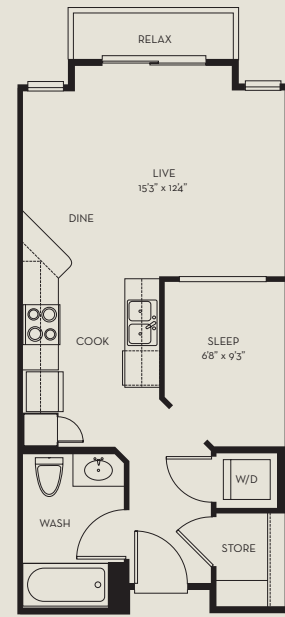
**HIP INTERIORS:**

- Unique and Spacious Studio, 1, 2 and 3 Bedroom Homes
- Stylish Black Whirlpool Appliances
- Washer & Dryer in Every Home
- Dishwasher
- Microwave
- Oversized windows
- Walk-in closets
- Fireplaces\*

**ABUNDANT AMENITIES**

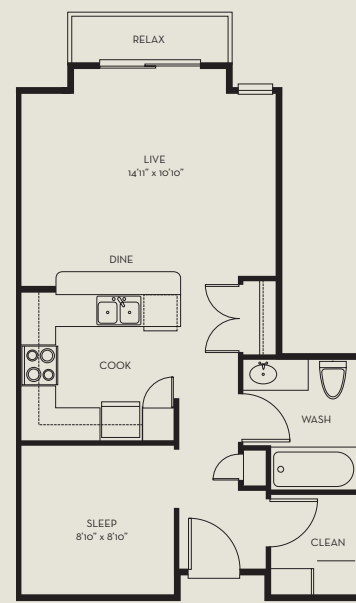
- Controlled-Access Garage Parking
- 24-Hour Fitness Center
- 24-Hour Business Center
- Complimentary Tanning
- Indoor Resistance Pool
- Indoor Therapeutic Spa
- Indoor Dry Sauna
- Movie Theatre with HD Projection Screen with Blu-Ray
- Billiards/Game Room/Lounge Area w/Full Kitchen
- Landscaped Courtyard with BBQ Grill

\* in select homes



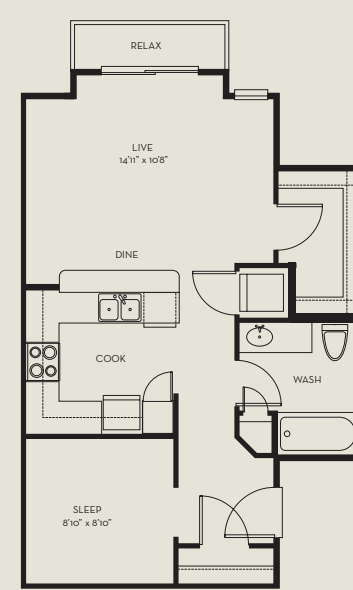
TAHOE • 518 Sq. Ft.  
Studio /One Bath

\$ \_\_\_\_\_



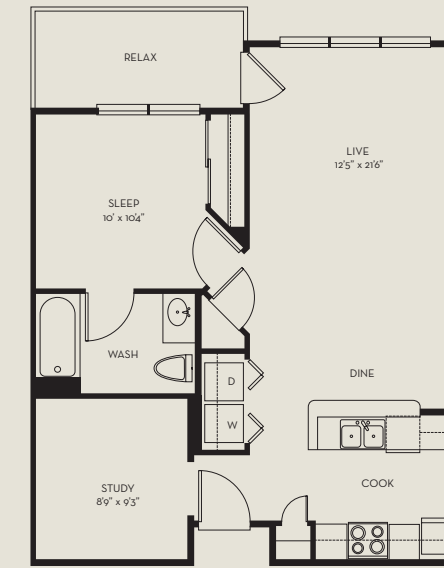
PALMETTO • 577 Sq. Ft.  
Studio /One Bath

\$ \_\_\_\_\_



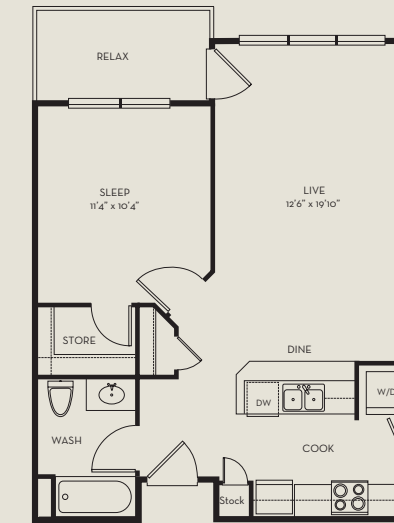
SANIBEL • 612 Sq. Ft.  
Studio /One Bath

\$ \_\_\_\_\_



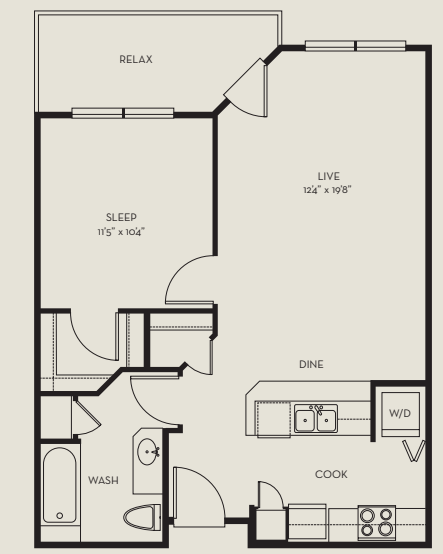
TAHITIAN • 765 Sq. Ft.  
One Bedroom / One Bath

\$ \_\_\_\_\_



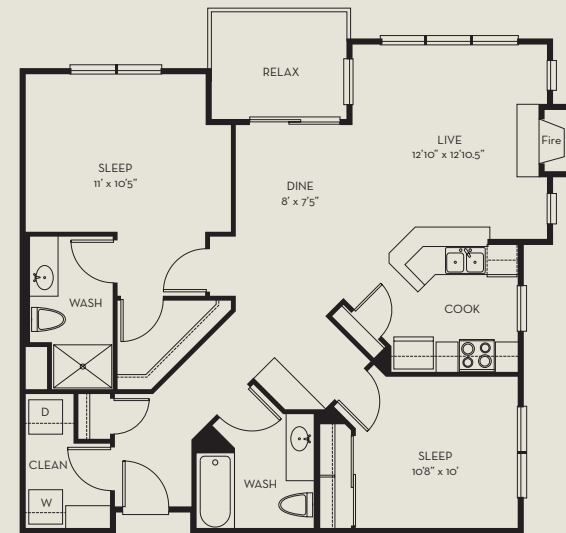
CAPTIVA • 677 Sq. Ft.  
One Bedroom / One Bath

\$ \_\_\_\_\_



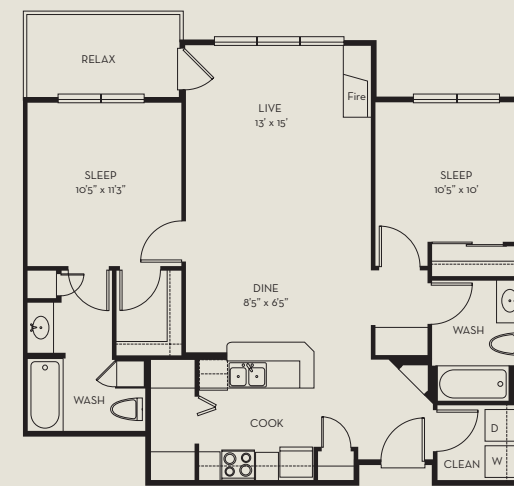
BOCA RATON • 675 Sq. Ft.  
One Bedroom / One Bath

\$ \_\_\_\_\_



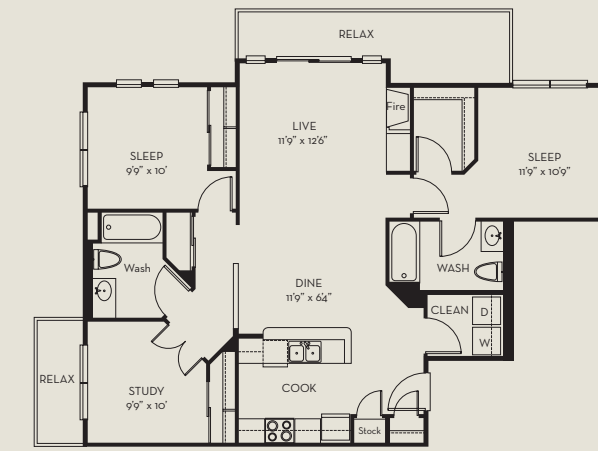
KEY LARGO • 1084 Sq. Ft.  
Two Bedrooms / Two Baths

\$ \_\_\_\_\_



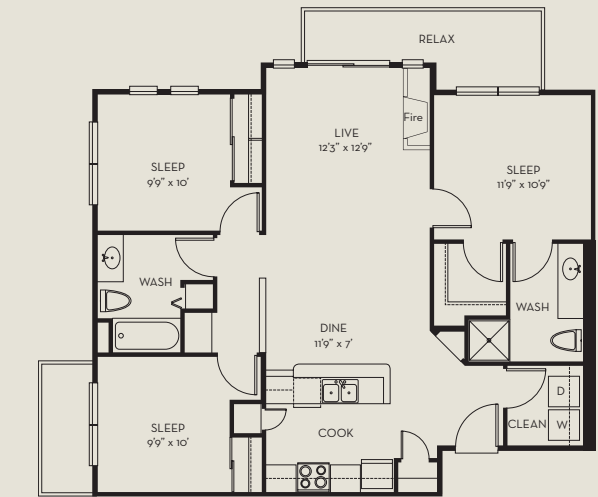
DEL MAR • 1008 Sq. Ft.  
Two Bedrooms / Two Baths

\$ \_\_\_\_\_



CORONADO • 1144 Sq. Ft.  
Two Bedroom / Two Bath / Den

\$ \_\_\_\_\_



SONESTA • 1089 Sq. Ft.  
Three Bedroom / Two Bath

\$ \_\_\_\_\_

Date: \_\_\_\_\_

Deposit \$ \_\_\_\_\_

Pet Deposit/ Pet Rent \$ \_\_\_\_\_

Application Fee \$ \_\_\_\_\_

Administration Fee \$ \_\_\_\_\_

Other \_\_\_\_\_

Prices change daily. Floor plans are not to scale. Dimensions and square footage may vary.