

## APARTMENT FEATURES

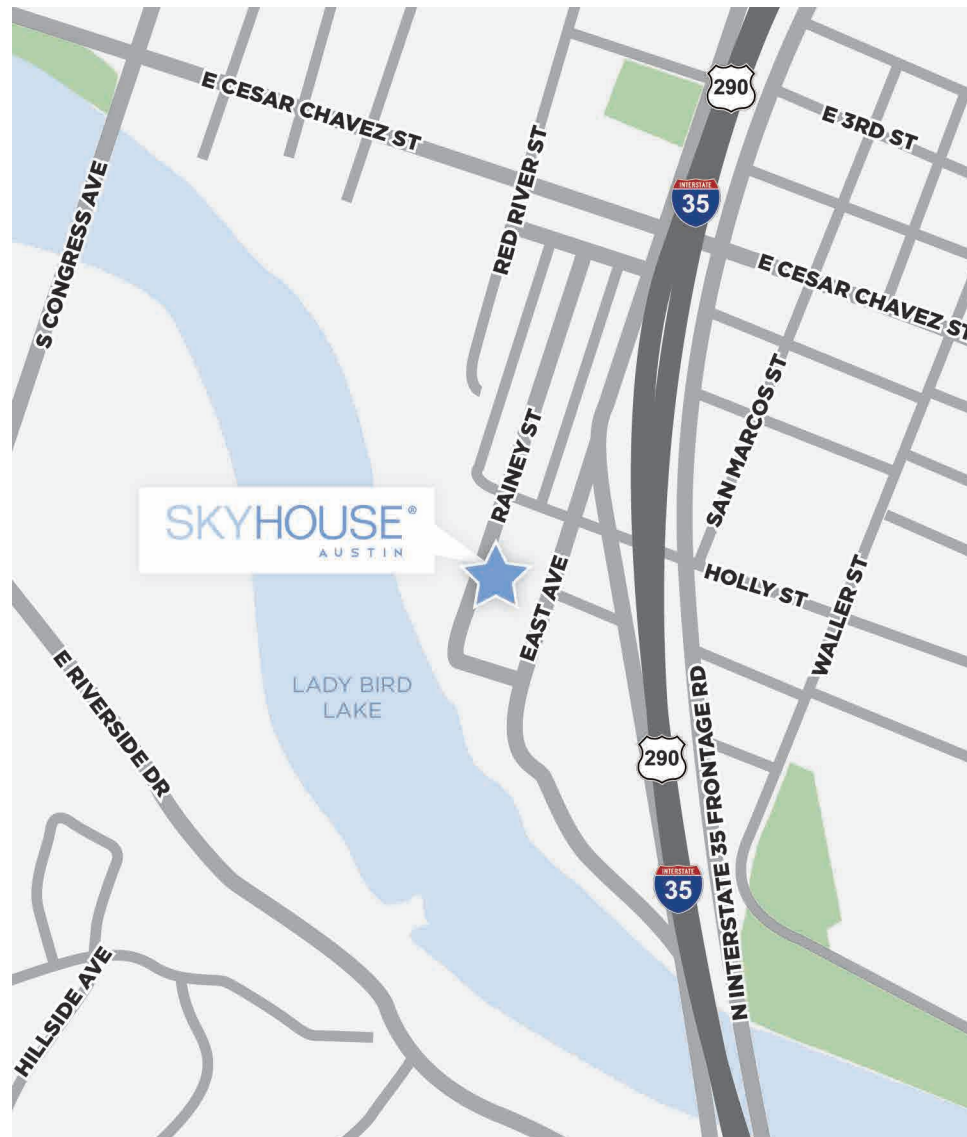
- Ceramic tile throughout
- Floor-to-ceiling windows showcasing dramatic views
- Generous closet space
- Hardwood flooring in living rooms
- Kohler® fixtures in kitchens and baths
- Modern open spaces with 9' ceilings
- Premium granite countertops in kitchens and baths
- Private balconies with expansive views
- Stylish wood cabinetry in kitchens and baths in choice of finishes
- Whirlpool® stainless steel appliances
- Whirlpool® washer and dryer

## COMMUNITY AMENITIES

- 24-hour concierge
- Clubroom with pool table and flat screen televisions
- Controlled access parking garage
- Environmentally conscious practices and design
- Modern fitness area
- Rooftop poolside lounge
- Terrace with fireplaces and outdoor seating
- Wi-fi through out the common area
- Anchors Rainey Street, Austin's most eclectic shopping and dining district
- Walking distance to Downtown Austin

**SKYHOUSE**<sup>®</sup>  
AUSTIN

## LOCATOR MAP



51 Rainey St., Austin, TX 78701  
(855) 286-8821  
[skyhouseaustin.com](http://skyhouseaustin.com)

A Simpson Property Group Community



**SKYHOUSE**<sup>®</sup>  
AUSTIN



# THE SKY LIFE

## NEW APARTMENTS

### STUDIOS



C - 618 SF



C1 - 544 SF



C2 - 585 SF

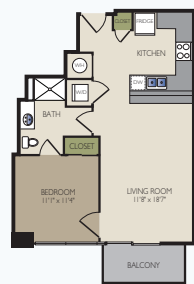


C3 - 585 SF



C4 - 672 SF

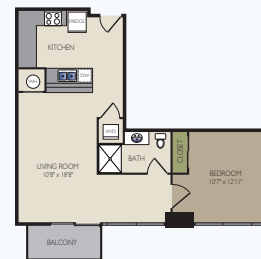
### 1 BEDROOMS



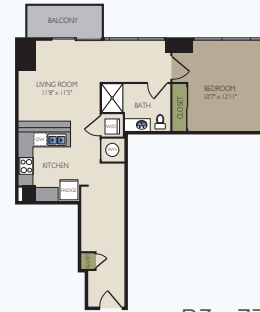
B - 679 SF



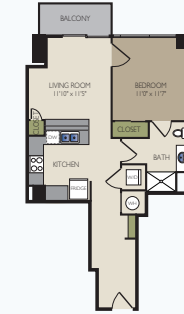
B1 - 729 SF



B2 - 762 SF



B3 - 737 SF



B4 - 655 SF



D - 691 SF



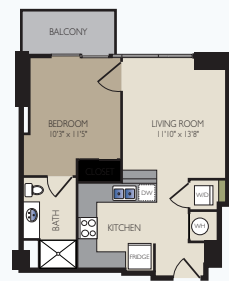
D2 - 724 SF



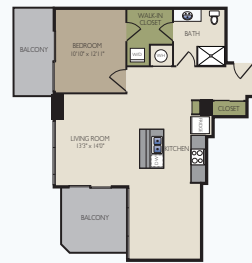
D3 - 691 SF



E1 - 760 SF



E3 - 593 SF



F - 900 SF



F1 - 948 SF



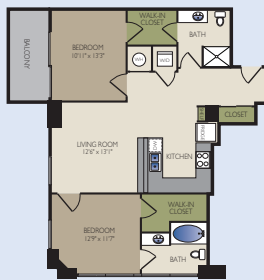
J1 - 1,391 SF

## LIVE THE SKY LIFE.

High on style with an impressive collection of features and amenities - like wall-to-wall ceramic tile, floor-to-ceiling windows, solid-surface countertops, private balconies, a happening club room, and a rooftop poolside lounge - this Downtown Austin skyrise is the epitome of upscale. Walking distance to shopping, dining, and the arts on Rainey Street and just a short bike ride from downtown, at SkyHouse, life is good.



### 2 BEDROOMS



A - 1,029 SF

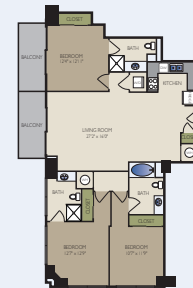


A1 - 1,079 SF



A2 - 1,029 SF

### 3 BEDROOMS



G - 1,449 SF



H - 1,382 SF



J - 1,451 SF



K - 1,509 SF



L - 1,346 SF



L1 - 1,346 SF



M - 1,217 SF