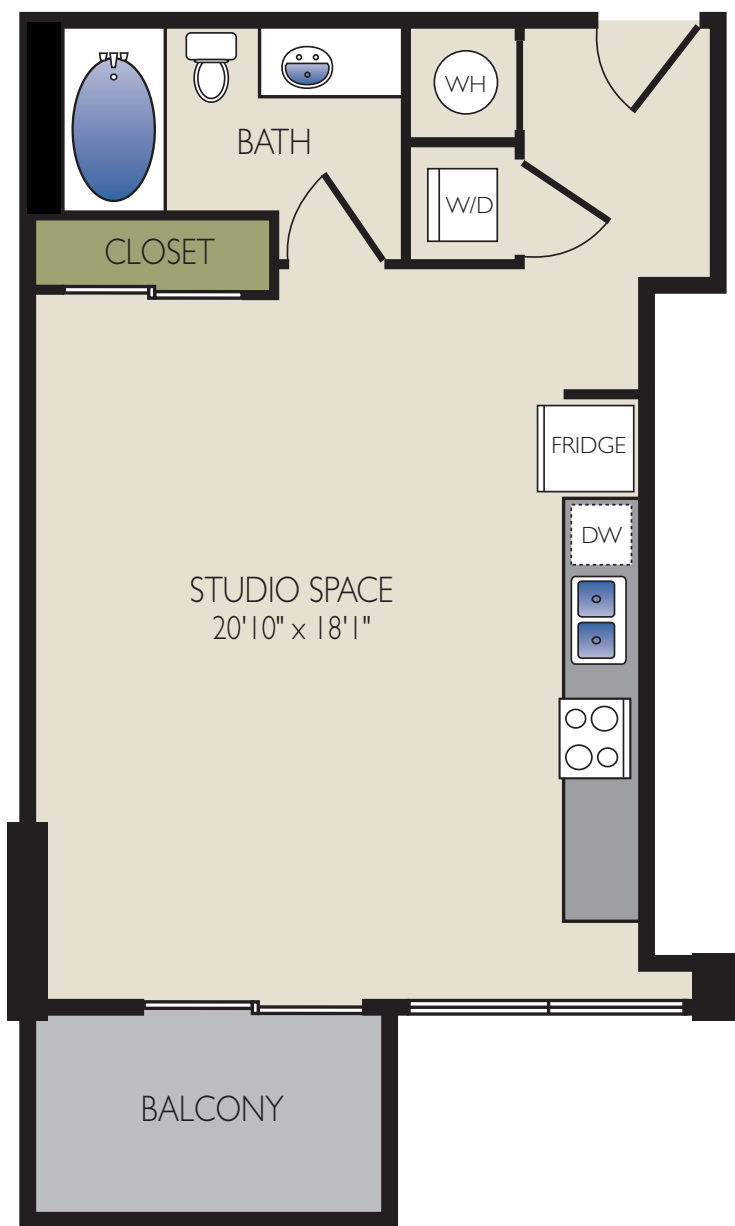


## STUDIO

C2 - 573 SF



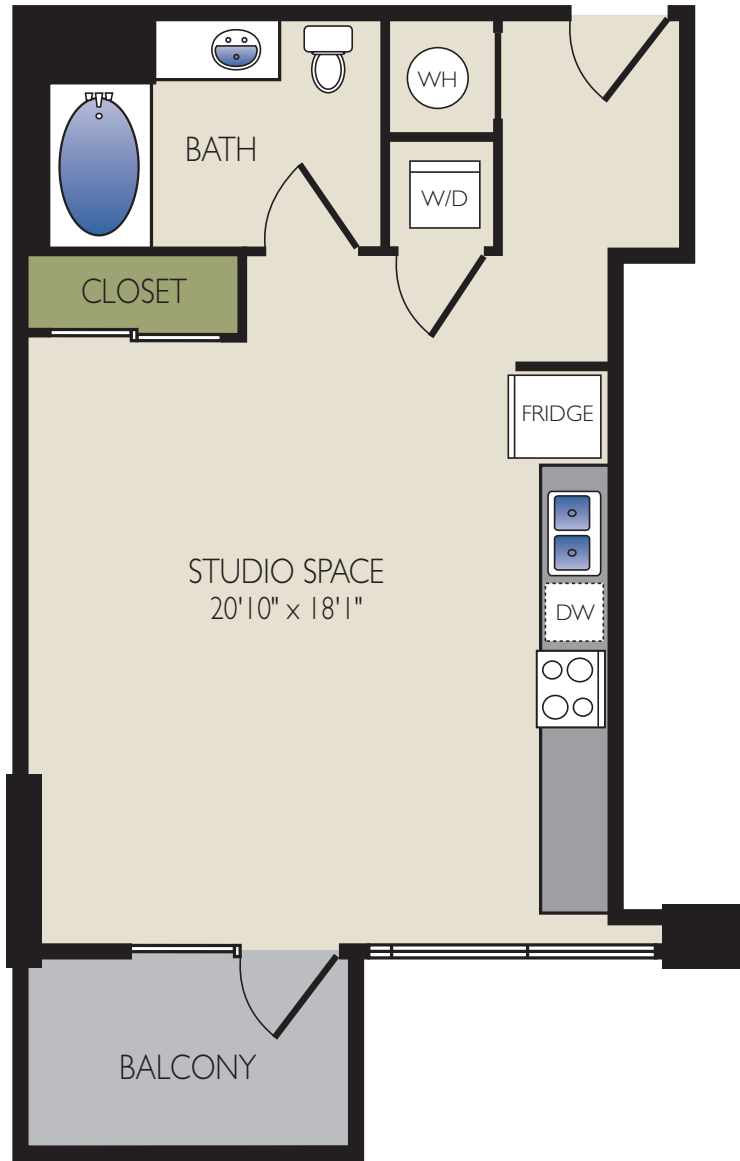
Monthly rent \$ \_\_\_\_\_ Administrative fee \$ \_\_\_\_\_

Application fee \$ \_\_\_\_\_ Deposit \$ \_\_\_\_\_

\*All dimensions and square footage are approximate. Pricing subject to change.  
We are happy to discuss specific unit modifications or accommodations at your request.

## STUDIO

C3 - 573 SF



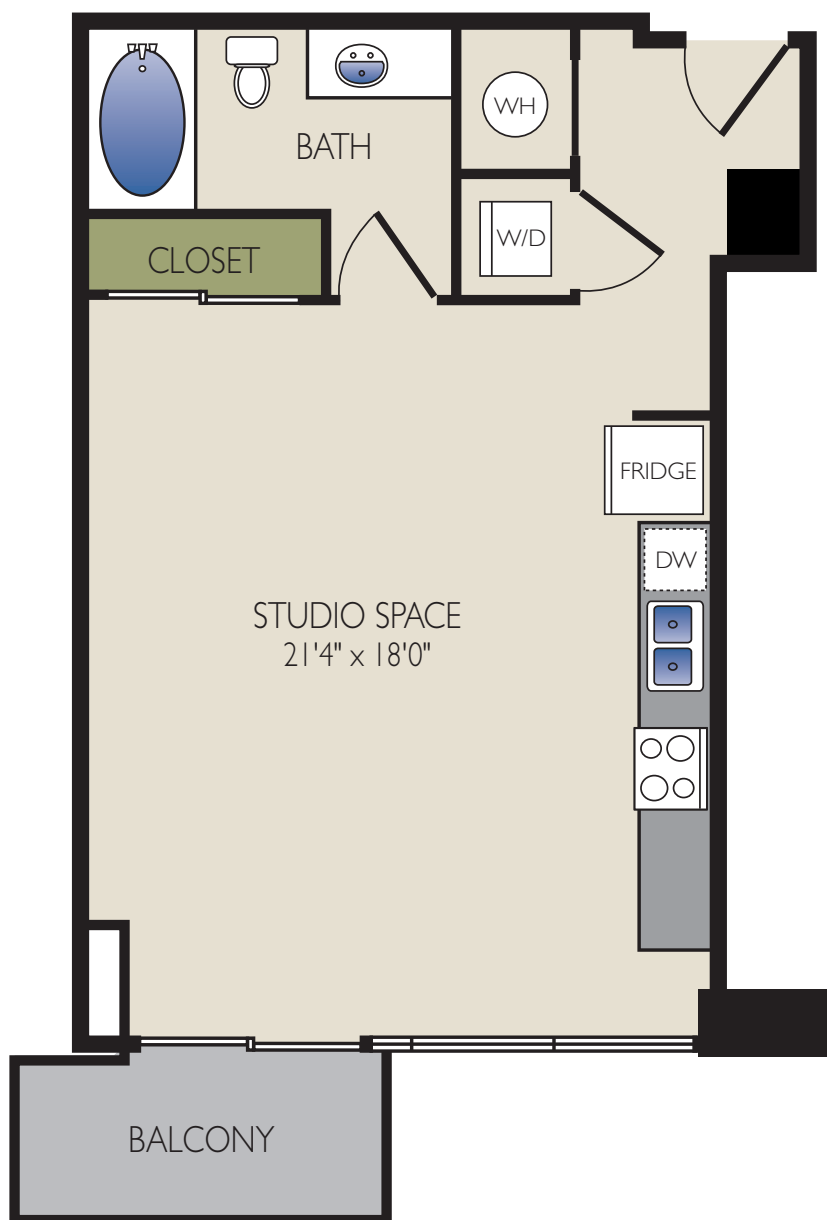
Monthly rent \$ \_\_\_\_\_ Administrative fee \$ \_\_\_\_\_

Application fee \$ \_\_\_\_\_ Deposit \$ \_\_\_\_\_

\*All dimensions and square footage are approximate. Pricing subject to change.  
We are happy to discuss specific unit modifications or accommodations at your request.  
♿ ADA Accessible

## STUDIO

C - 617 SF



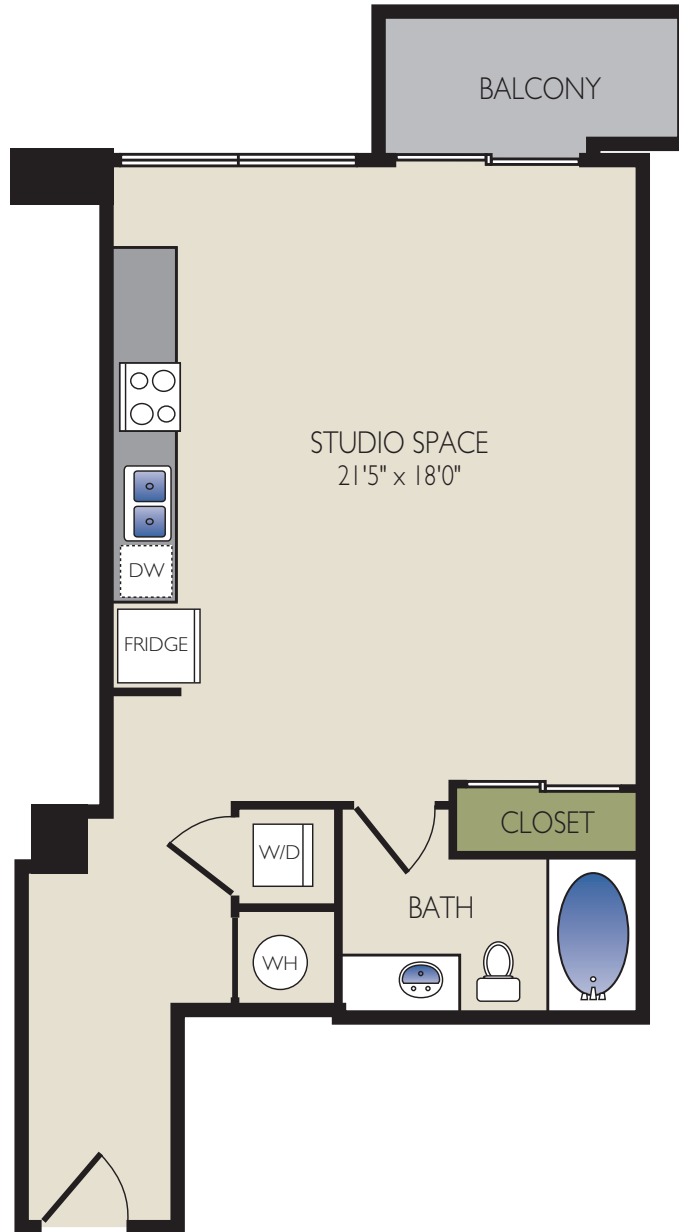
Monthly rent \$ \_\_\_\_\_ Administrative fee \$ \_\_\_\_\_

Application fee \$ \_\_\_\_\_ Deposit \$ \_\_\_\_\_

\*All dimensions and square footage are approximate. Pricing subject to change.  
We are happy to discuss specific unit modifications or accommodations at your request.

## STUDIO

C1 - 620 SF



Monthly rent \$ \_\_\_\_\_

Administrative fee \$ \_\_\_\_\_

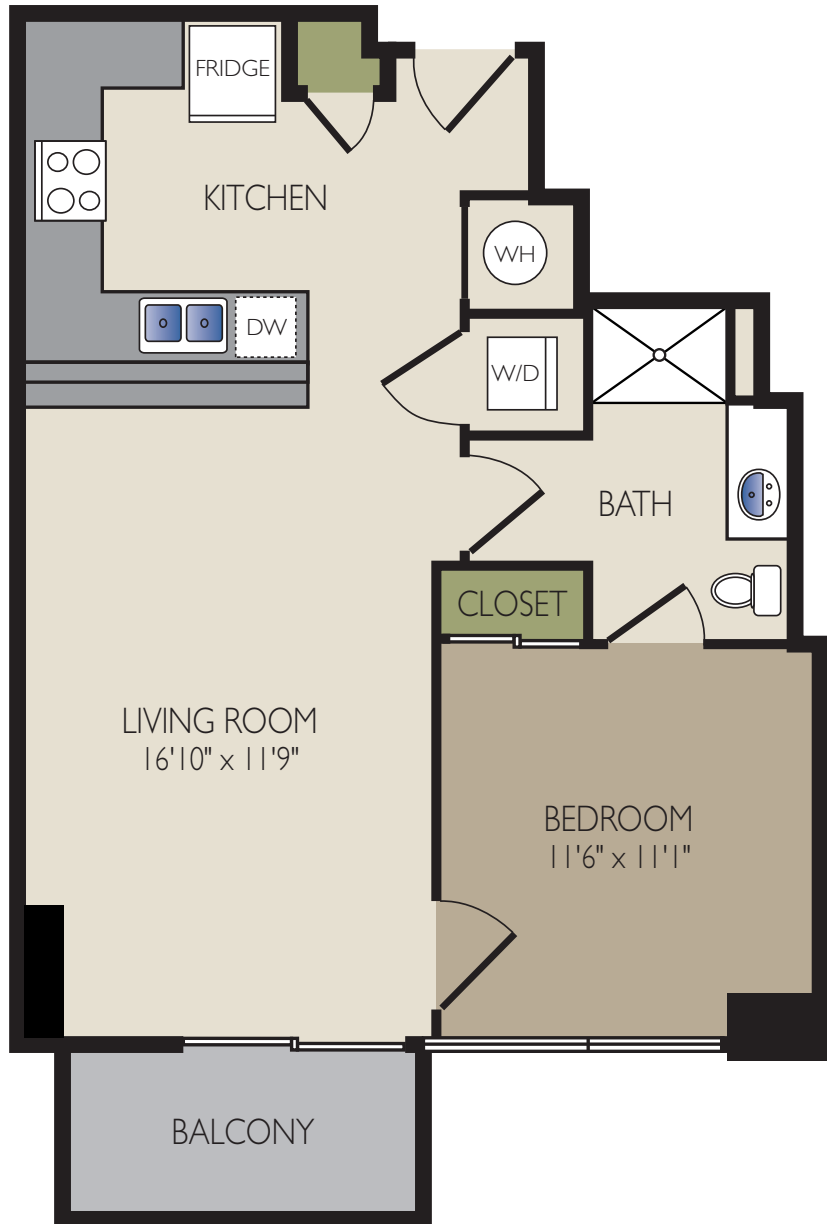
Application fee \$ \_\_\_\_\_

Deposit \$ \_\_\_\_\_

\*All dimensions and square footage are approximate. Pricing subject to change.  
We are happy to discuss specific unit modifications or accommodations at your request.

## 1 BEDROOM / 1 BATH

B - 681 SF



Monthly rent \$ \_\_\_\_\_ Administrative fee \$ \_\_\_\_\_

Application fee \$ \_\_\_\_\_ Deposit \$ \_\_\_\_\_

\*All dimensions and square footage are approximate. Pricing subject to change.  
We are happy to discuss specific unit modifications or accommodations at your request.

## 1 BEDROOM / 1 BATH

D2 - 681 SF



Monthly rent \$ \_\_\_\_\_

Administrative fee \$ \_\_\_\_\_

Application fee \$ \_\_\_\_\_

Deposit \$ \_\_\_\_\_

\*All dimensions and square footage are approximate. Pricing subject to change.  
We are happy to discuss specific unit modifications or accommodations at your request.

**1 BEDROOM / 1 BATH**  
**D3 - 681 SF**



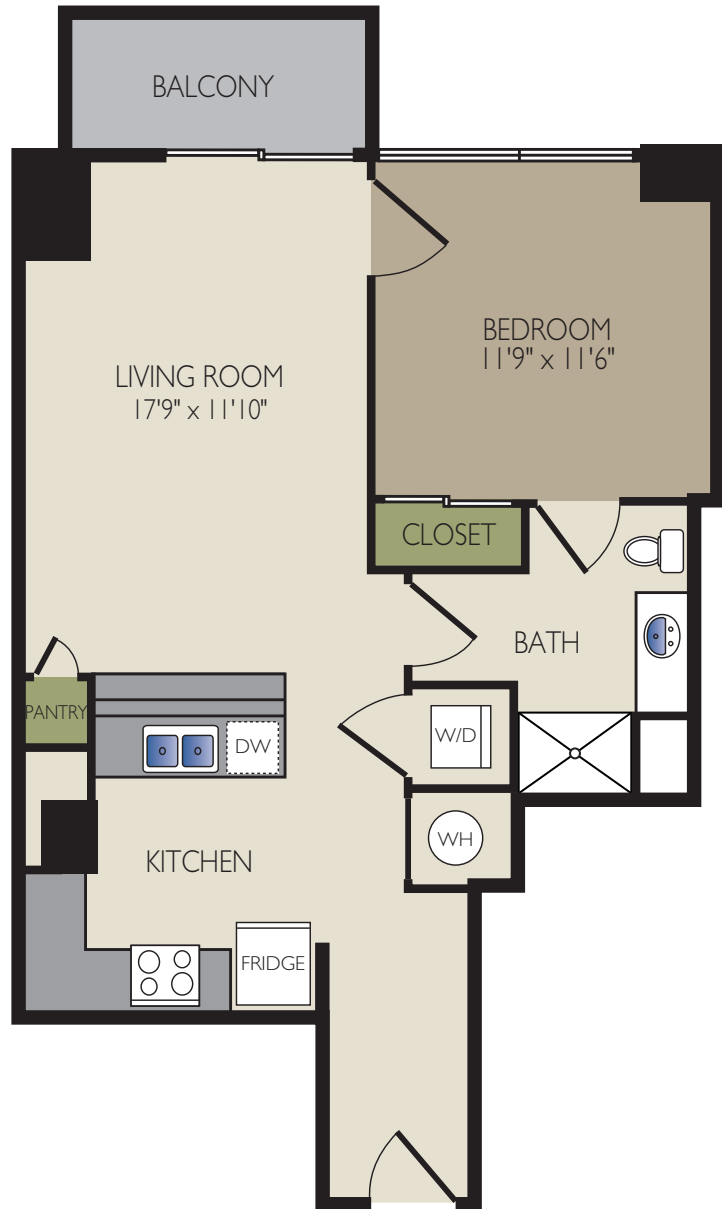
Monthly rent \$ \_\_\_\_\_ Administrative fee \$ \_\_\_\_\_

Application fee \$ \_\_\_\_\_ Deposit \$ \_\_\_\_\_

\*All dimensions and square footage are approximate. Pricing subject to change.  
 We are happy to discuss specific unit modifications or accommodations at your request.  
 ♿ ADA Accessible

## 1 BEDROOM / 1 BATH

B1 - 702 SF



Monthly rent \$ \_\_\_\_\_

Administrative fee \$ \_\_\_\_\_

Application fee \$ \_\_\_\_\_

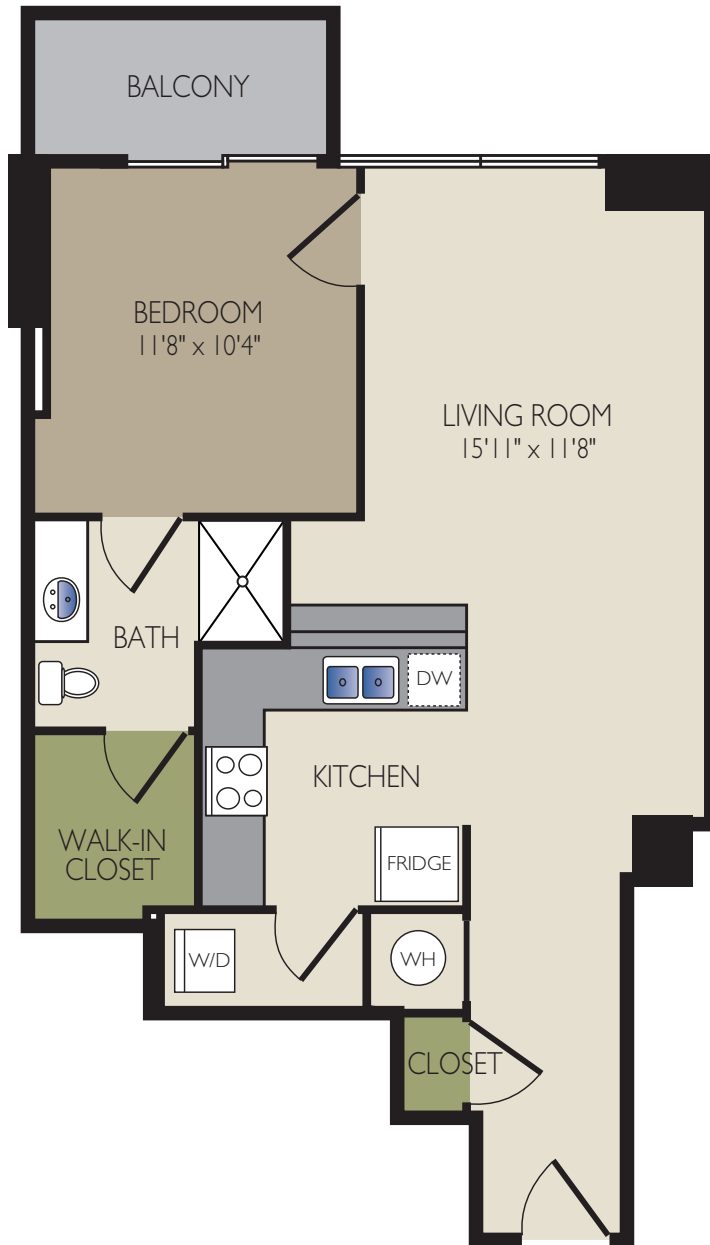
Deposit \$ \_\_\_\_\_

\*All dimensions and square footage are approximate. Pricing subject to change.  
We are happy to discuss specific unit modifications or accommodations at your request.



## 1 BEDROOM / 1 BATH

E1 - 723 SF



Monthly rent \$ \_\_\_\_\_ Administrative fee \$ \_\_\_\_\_

Application fee \$ \_\_\_\_\_ Deposit \$ \_\_\_\_\_

\*All dimensions and square footage are approximate. Pricing subject to change.  
We are happy to discuss specific unit modifications or accommodations at your request.

## 1 BEDROOM / 1 BATH

D - 724 SF



Monthly rent \$ \_\_\_\_\_

Administrative fee \$ \_\_\_\_\_

Application fee \$ \_\_\_\_\_

Deposit \$ \_\_\_\_\_

\*All dimensions and square footage are approximate. Pricing subject to change.  
We are happy to discuss specific unit modifications or accommodations at your request.

## 1 BEDROOM / 1 BATH

B2 - 742 SF



Monthly rent \$ \_\_\_\_\_

Administrative fee \$ \_\_\_\_\_

Application fee \$ \_\_\_\_\_

Deposit \$ \_\_\_\_\_

\*All dimensions and square footage are approximate. Pricing subject to change.  
We are happy to discuss specific unit modifications or accommodations at your request.

## 1 BEDROOM / 1 BATH

B3 - 760 SF



Monthly rent \$ \_\_\_\_\_ Administrative fee \$ \_\_\_\_\_

Application fee \$ \_\_\_\_\_ Deposit \$ \_\_\_\_\_

\*All dimensions and square footage are approximate. Pricing subject to change.  
We are happy to discuss specific unit modifications or accommodations at your request.

## 1 BEDROOM / 1 BATH

F - 861 SF



Monthly rent \$ \_\_\_\_\_ Administrative fee \$ \_\_\_\_\_

Application fee \$ \_\_\_\_\_ Deposit \$ \_\_\_\_\_

\*All dimensions and square footage are approximate. Pricing subject to change.  
We are happy to discuss specific unit modifications or accommodations at your request.

## 1 BEDROOM / 1 BATH

F1 - 885 SF



Monthly rent \$ \_\_\_\_\_ Administrative fee \$ \_\_\_\_\_

Application fee \$ \_\_\_\_\_ Deposit \$ \_\_\_\_\_

\*All dimensions and square footage are approximate. Pricing subject to change.  
We are happy to discuss specific unit modifications or accommodations at your request.

## 2 BEDROOM / 2 BATH

A - 991 SF



Monthly rent \$ \_\_\_\_\_ Administrative fee \$ \_\_\_\_\_

Application fee \$ \_\_\_\_\_ Deposit \$ \_\_\_\_\_

\*All dimensions and square footage are approximate. Pricing subject to change.  
We are happy to discuss specific unit modifications or accommodations at your request.

**2 BEDROOM / 2 BATH**  
**A2 - 991 SF**



Monthly rent \$ \_\_\_\_\_ Administrative fee \$ \_\_\_\_\_

Application fee \$ \_\_\_\_\_ Deposit \$ \_\_\_\_\_

\*All dimensions and square footage are approximate. Pricing subject to change.  
 We are happy to discuss specific unit modifications or accommodations at your request.  
 ♿ ADA Accessible



**2 BEDROOM / 2 BATH**  
**A1 - 1016 SF**



Monthly rent \$ \_\_\_\_\_ Administrative fee \$ \_\_\_\_\_

Application fee \$ \_\_\_\_\_ Deposit \$ \_\_\_\_\_

\*All dimensions and square footage are approximate. Pricing subject to change.  
 We are happy to discuss specific unit modifications or accommodations at your request.

## 3 BEDROOM / 3 BATH

L1 - 1318 SF



Monthly rent \$ \_\_\_\_\_ Administrative fee \$ \_\_\_\_\_

Application fee \$ \_\_\_\_\_ Deposit \$ \_\_\_\_\_

\*All dimensions and square footage are approximate. Pricing subject to change.  
 We are happy to discuss specific unit modifications or accommodations at your request.  
 ♿ ADA Accessible

## 3 BEDROOM / 3 BATH

L - 1318 SF



Monthly rent \$ \_\_\_\_\_ Administrative fee \$ \_\_\_\_\_

Application fee \$ \_\_\_\_\_ Deposit \$ \_\_\_\_\_

\*All dimensions and square footage are approximate. Pricing subject to change.  
We are happy to discuss specific unit modifications or accommodations at your request.

## 3 BEDROOM / 3 BATH

G - 1348 SF



Monthly rent \$ \_\_\_\_\_ Administrative fee \$ \_\_\_\_\_

Application fee \$ \_\_\_\_\_ Deposit \$ \_\_\_\_\_

\*All dimensions and square footage are approximate. Pricing subject to change.  
We are happy to discuss specific unit modifications or accommodations at your request.



**3 BEDROOM / 3 BATH**  
**H - 1374 SF**



Monthly rent \$ \_\_\_\_\_ Administrative fee \$ \_\_\_\_\_

Application fee \$ \_\_\_\_\_ Deposit \$ \_\_\_\_\_

\*All dimensions and square footage are approximate. Pricing subject to change.  
 We are happy to discuss specific unit modifications or accommodations at your request.

**3 BEDROOM / 3 BATH**  
**J - 1403 SF**



Monthly rent \$ \_\_\_\_\_ Administrative fee \$ \_\_\_\_\_

Application fee \$ \_\_\_\_\_ Deposit \$ \_\_\_\_\_

\*All dimensions and square footage are approximate. Pricing subject to change.  
 We are happy to discuss specific unit modifications or accommodations at your request.

## 3 BEDROOM / 3 BATH

K - 1412 SF



Monthly rent \$ \_\_\_\_\_ Administrative fee \$ \_\_\_\_\_

Application fee \$ \_\_\_\_\_ Deposit \$ \_\_\_\_\_

\*All dimensions and square footage are approximate. Pricing subject to change.  
We are happy to discuss specific unit modifications or accommodations at your request.