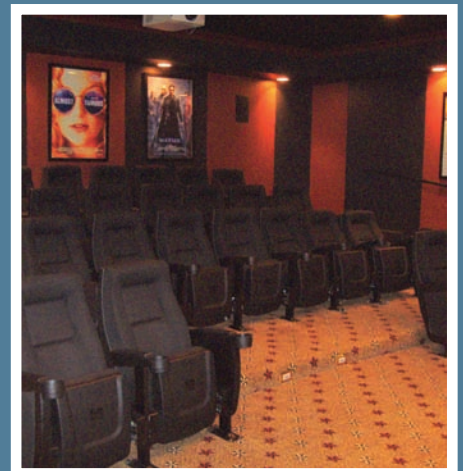
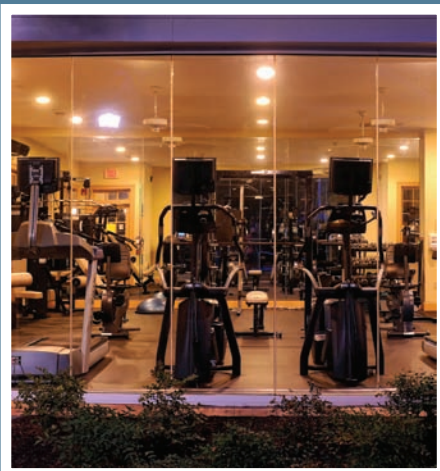
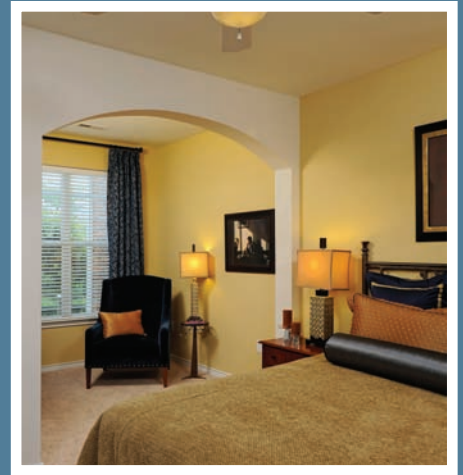




# PROMENADE PARK







Promenade Park not only offers you a premium location, but also the finest apartment living in the Ballantyne area. Surround yourself with sleek black appliances, slate-tiled floors and spa-styled bathrooms. As a resident you will enjoy a luxurious lifestyle complete with top of the line customer service and unsurpassed amenities. Incredibly, all are just steps away from great shopping, entertainment and dining.

**LIVING**

- Full-size washer and dryer included
- Built-in computer library
- Gourmet kitchen with black appliances
- Custom cabinetry with brushed nickel hardware
- Granite-style countertops
- Spacious kitchen pantry
- Side-by-side refrigerator with icemaker
- Ceiling fans, dishwasher, microwave
- Garbage disposal
- Slate tile entry and kitchen floor
- Garden tubs
- Double vanities
- Ceramic tile bathroom floors
- Built-in bookshelves\*
- Oversized closets
- 9 foot ceilings
- Crown molding
- 2 inch blinds
- Oversized porches and decks

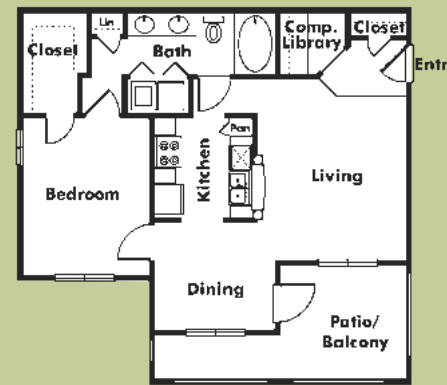
\* in select apartments

**LIFESTYLE**

- Award winning schools
- Walk to shopping and dining at Promenade on Providence
- 24/7 fitness center with free weights and cardio theater
- Clubroom with billiards and TV
- 28-seat private theater with surround sound, blue ray and DVD player
- Saltwater swimming pool
- Dog park
- Playground
- Poolside grill
- Resident business center
- Free WiFi in clubhouse
- Car care center
- Detached garages available
- 24/7 emergency maintenance

**CONVENIENCE**

- Package receiving
- Free dog grooming
- Mail pick-up when you travel
- Plant care while you are away
- Valet dry cleaning
- Gift wrapping



**SOMERSET**  
One Bedroom / One Bath  
819 Sq. Ft.

\$ \_\_\_\_\_



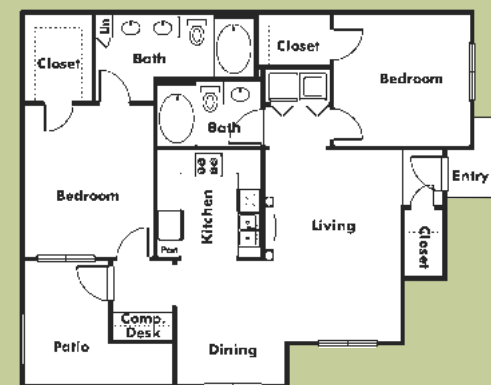
**OAKLAND**  
One Bedroom / One Bath  
1083 Sq. Ft.

\$ \_\_\_\_\_

w/o garage

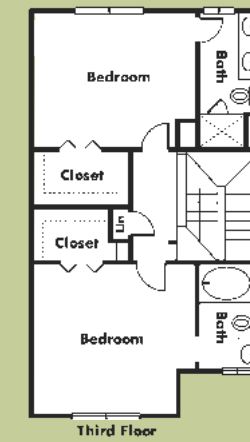
\$ \_\_\_\_\_

with garage

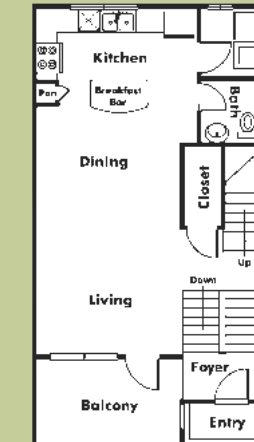


**WAVERLY**  
Two Bedrooms / Two Baths  
1109 Sq. Ft.

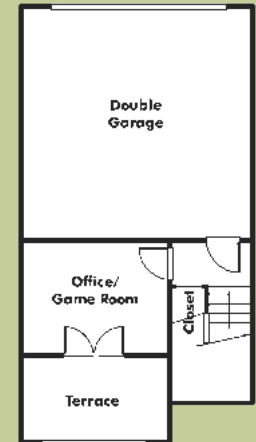
\$ \_\_\_\_\_



Third Floor



Second Floor



Ground Floor

**BELMONT TOWNHOME**

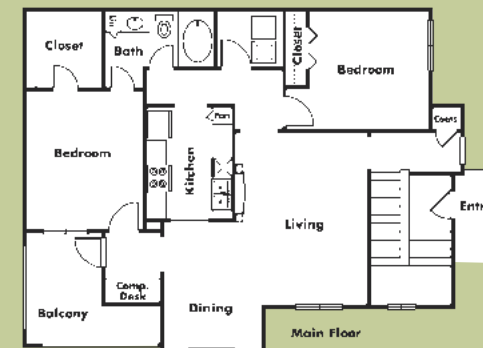
Two Bedrooms / Two and a half Baths / Two Car Garage  
1534 Sq. Ft.

\$ \_\_\_\_\_

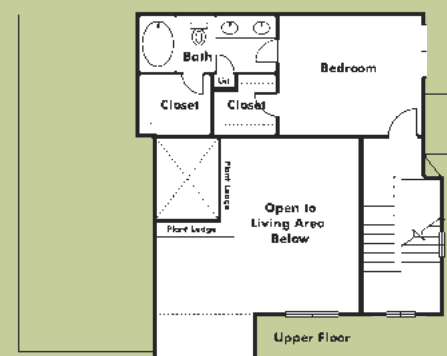


**MIDDLETON**  
Two Bedrooms / Two Baths / One Car Garage  
1254 Sq. Ft.

\$ \_\_\_\_\_



Main Floor



Upper Floor

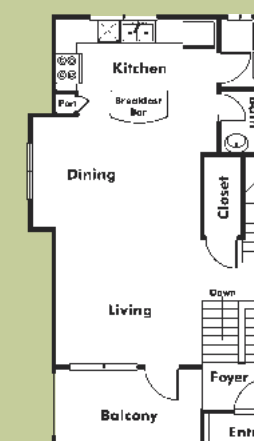
**TALLWOOD**

Three Bedrooms / Two Baths / Loft  
1575 Sq. Ft.

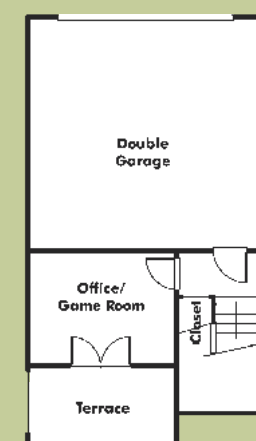
\$ \_\_\_\_\_



Third Floor



Second Floor



Ground Floor

**BILTMORE TOWNHOME**

Three Bedrooms / Two and a half Baths / Two Car Garage  
1610 Sq. Ft.

\$ \_\_\_\_\_

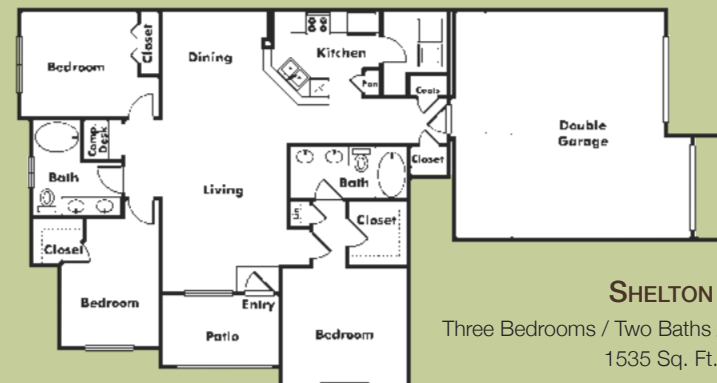
Date \_\_\_\_\_

Application Fee \$ \_\_\_\_\_

Administrative Fee \$ \_\_\_\_\_

Garage Rent \$ \_\_\_\_\_

Pet Fee \$ \_\_\_\_\_



**SHELTON**  
Three Bedrooms / Two Baths / Two Car Garage  
1535 Sq. Ft.

\$ \_\_\_\_\_



From I-485 take exit 57 (Hwy 16 / Providence Road) heading north. Turn left onto Ballantyne Commons Parkway. Promenade Park is ahead on the left.

# PROMENADE PARK

11115 Shadow Grove Circle  
Charlotte, NC 28277  
704.321.7226  
PromenadePark.com

