

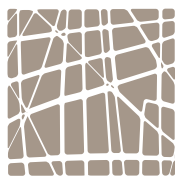
THE DISTRICT AT
GREENBRIAR

PREMIER APARTMENT HOMES

THE *minutes-from-everywhere* DISTRICT

Welcome to The District at Greenbriar – a brand new community of premium apartment homes nestled between the museum and design districts.

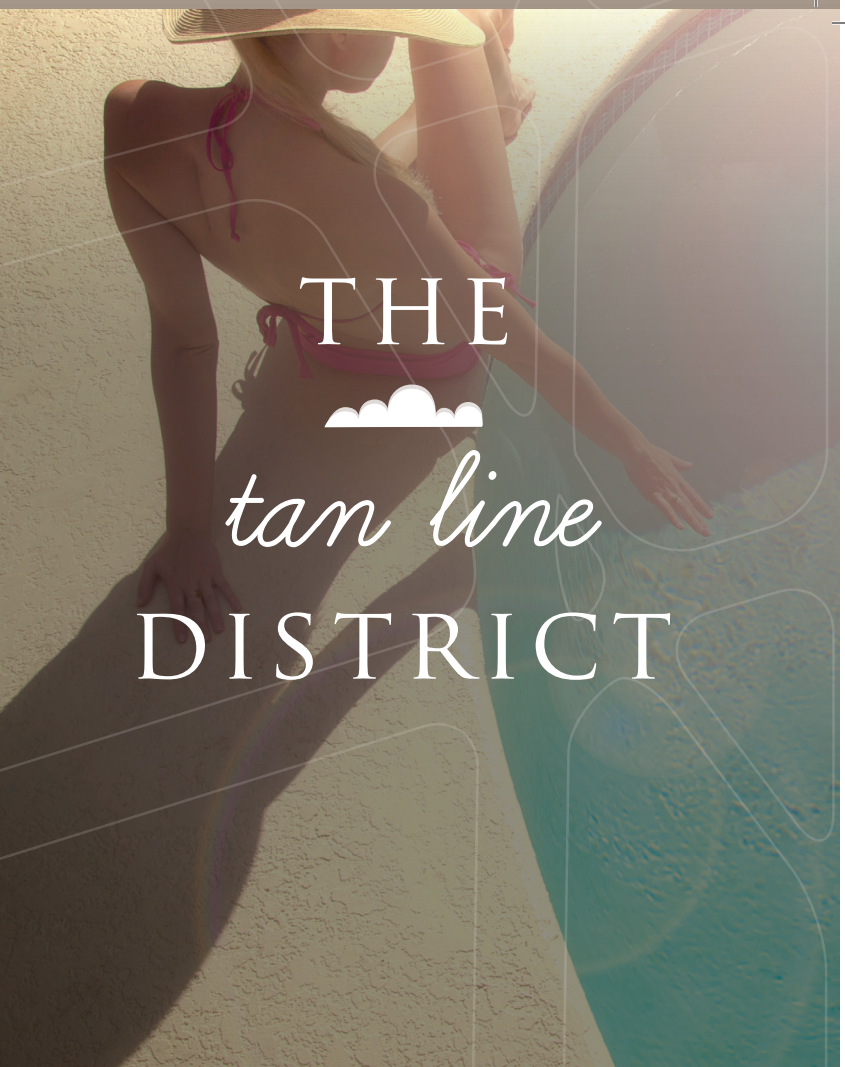
- WALKING DISTANCE TO RICE UNIVERSITY AND RICE VILLAGE
- CONVENIENT TO TEXAS MEDICAL CENTER
- CLOSE TO HERMANN PARK AND THE HOUSTON ZOO
- DIRECT ACCESS TO SOUTHWEST FREEWAY AND METRO RED LINE



THE DISTRICT AT
GREENBRIAR



THE
pampering
DISTRICT



THE
tan line
DISTRICT



THE
inspiration
DISTRICT

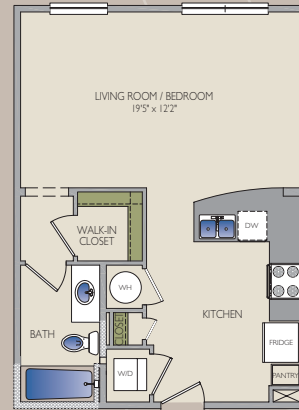


THE
foodie
DISTRICT

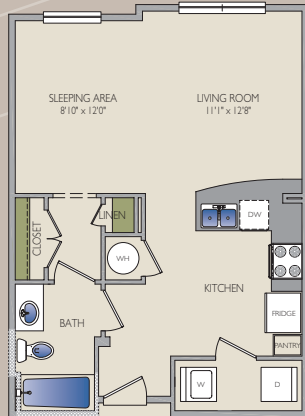
FLOORPLANS



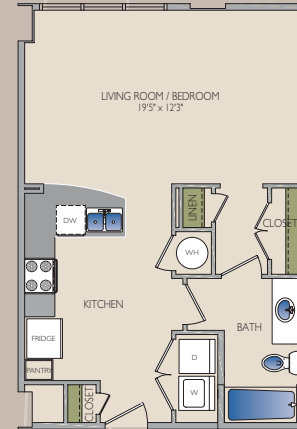
BISSONNET
 · STUDIO
 · 1 BATHROOM
 · 558 SQFT



ALABAMA
 · STUDIO
 · 1 BATHROOM
 · 569 SQFT



SAN FELIPE
 · STUDIO
 · 1 BATHROOM
 · 586 SQFT



WOODHEAD
 · STUDIO
 · 1 BATHROOM
 · 610 SQFT

THE *unwinding* DISTRICT

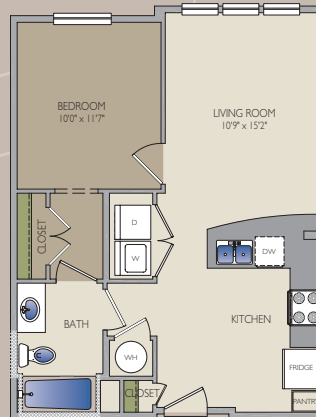
- RESIDENT LOUNGE WITH CYBER CAFÉ AND DEMONSTRATION KITCHEN
- LANDSCAPED COURTYARD WITH GAS GRILLS
- EXPANSIVE FITNESS CENTER
- FREE WEIGHTS AND WEIGHT MACHINES
- CARDIO EQUIPMENT WITH PERSONAL TELEVISION
- ACCESS TO SHOPPING, RESTAURANTS AND ENTERTAINMENT
- CLOSE PROXIMITY TO THE GALLERIA AND RIVER OAKS
- CLOSE TO DOWNTOWN HOUSTON





SAN JACINTO

- 1 BEDROOM
- 1 BATHROOM
- 619 SQFT



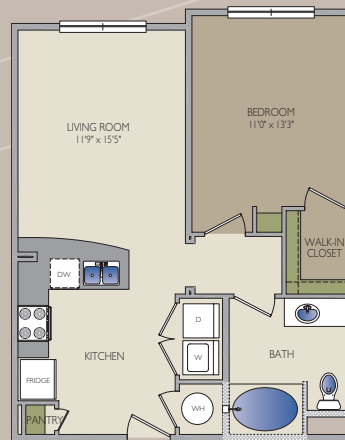
KIRBY

- 1 BEDROOM
- 1 BATHROOM
- 622 SQFT



ROBINHOOD

- 1 BEDROOM
- 1 BATHROOM
- 704 SQFT



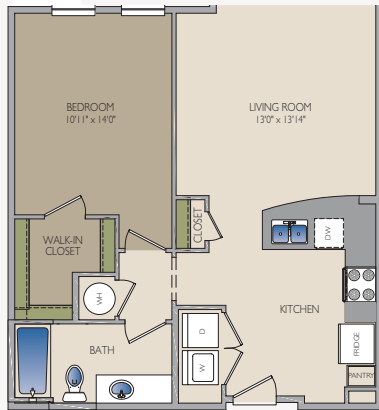
RICE

- 1 BEDROOM
- 1 BATHROOM
- 708 SQFT

THE *finishing touches* DISTRICT

- FULL SIZE WASHER AND DRYER
- ON SITE GARAGE PARKING
- VANITIES WITH LIMESTONE COUNTER AND ESPRESSO CABINETS
- DUAL SINKS AVAILABLE
- BRUSHED NICKEL HARDWARE THROUGHOUT
- ESPRESSO KITCHEN CABINETS WITH CONTEMPORARY HARDWARE
- FRENCH DOOR REFRIGERATOR AND SMOOTH CERAMIC TOP RANGE
- PENDANT LIGHTS OVER KITCHEN ISLANDS
- CONTEMPORARY VANITY AND SLEEK OVERHEAD LIGHTING
- CROWN MOLDING IN LIVING AND DINING ROOMS





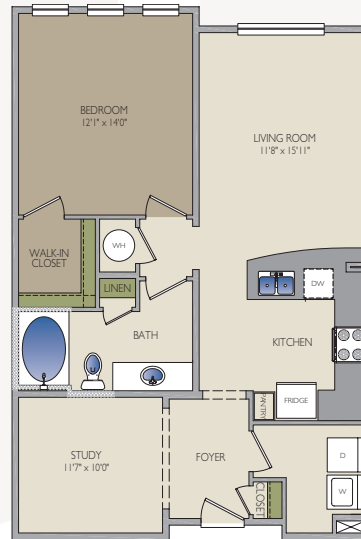
DUNLAVY
 · 1 BEDROOM
 · 1 BATHROOM
 · 734 SQFT



FANNIN
 · 1 BEDROOM
 · 1 BATHROOM
 · 752 SQFT



SUNSET
 · 1 BEDROOM
 · 1 BATHROOM
 · 808 SQFT



GREENBRIAR
 · 1 BEDROOM
 · 1 BATHROOM
 · 901 SQFT

THE personal sanctuary DISTRICT

- CHEF'S KITCHENS FEATURING GE STAINLESS APPLIANCES
- GRANITE COUNTERTOPS AND SUBWAY TILED BACKSPASHES
- HARDWOOD FLOORS & FRISE CARPET
- BATHS WITH CERAMIC TILE FLOORS AND TUB SURROUND
- GARDEN TUBS AND SEPARATE SHOWERS AVAILABLE
- PRIVATE BALCONIES AVAILABLE



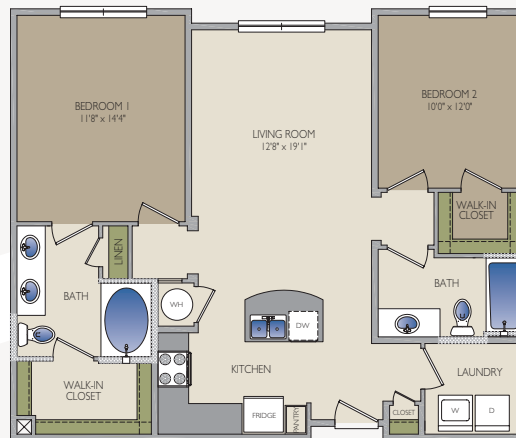
THE *time-is-now* DISTRICT

RESERVE YOUR PLACE TODAY AND MAKE HOUSTON'S NEWEST SOPHISTICATED APARTMENT COMMUNITY THE DISTRICT OF YOU.



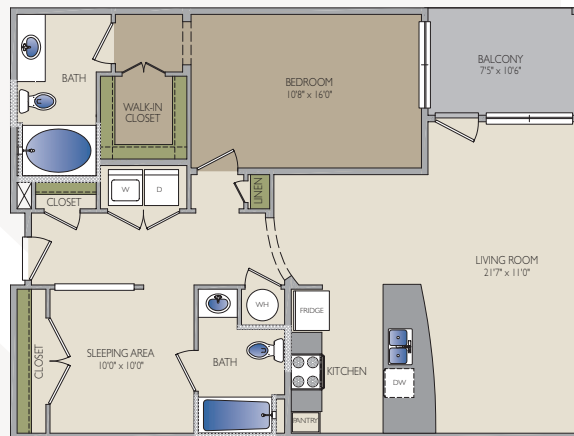
WESTHEIMER

- 2 BEDROOM
- 2 BATHROOM
- 1047 SQFT



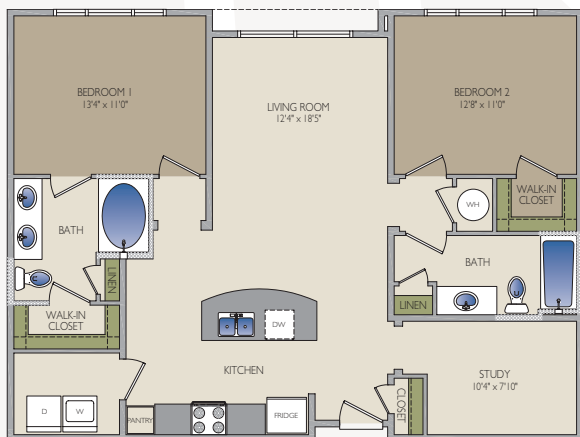
RICHMOND

- 2 BEDROOM
- 2 BATHROOM
- 1063 SQFT



SHEPHERD

- 2 BEDROOM
- 2 BATHROOM
- 1113 SQFT



MONTROSE

- 2 BEDROOM
- 2 BATHROOM
- 1195 SQFT



UNIVERSITY

- 2 BEDROOM
- 2 BATHROOM
- 1250 SQFT



relax.
enjoy.
live.

www.SimpsonPropertyGroup.com

THE DISTRICT
AT GREENBRIAR

4100 GREENBRIAR ST.
HOUSTON, TX 77098

DISTRICTATGREENBRIAR.COM
855.826.1773